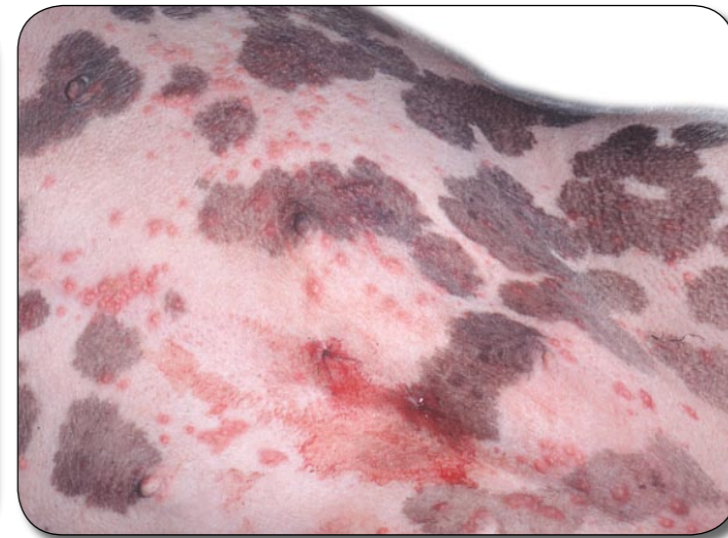


DOES YOUR DOG HAVE THESE SYMPTOMS?



For more information on common trees, grasses, weeds and other plants that may cause red, itchy skin; visit the allergy information link at: www.dermcare.com.au



Does your pet have red, itchy skin on its stomach, chest, muzzle or between the toes? If so it could be a contact allergy to one of these plants. Ask your vet for more information.



Zebrina (Tradescantia zebrina)



Inch Plant (Callisia fragrans)



Purple Heart (Tradescantia pallida)



Turtle Vine (Callisia repens)



Moses-in-a-cradle (Tradescantia spathacea)



Scurvy Weed (Commelina cyanea)



Dermcare-Vet Pty Ltd 22 Aranda Street, Springwood QLD 4127
Ph: 07 3387 9700 Web: www.dermcare.com.au

HEALTHY SKIN HEALTHY FOR LIFE

